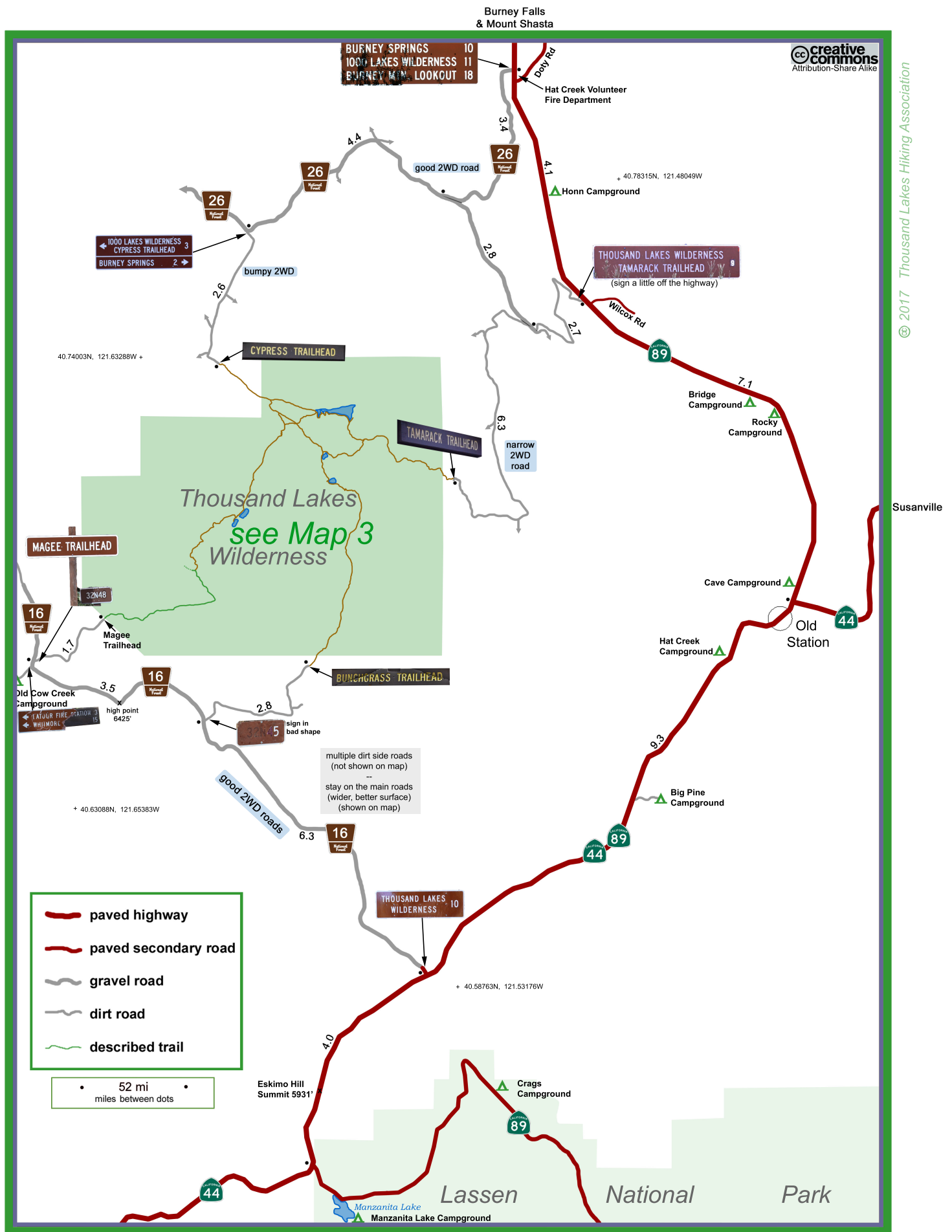
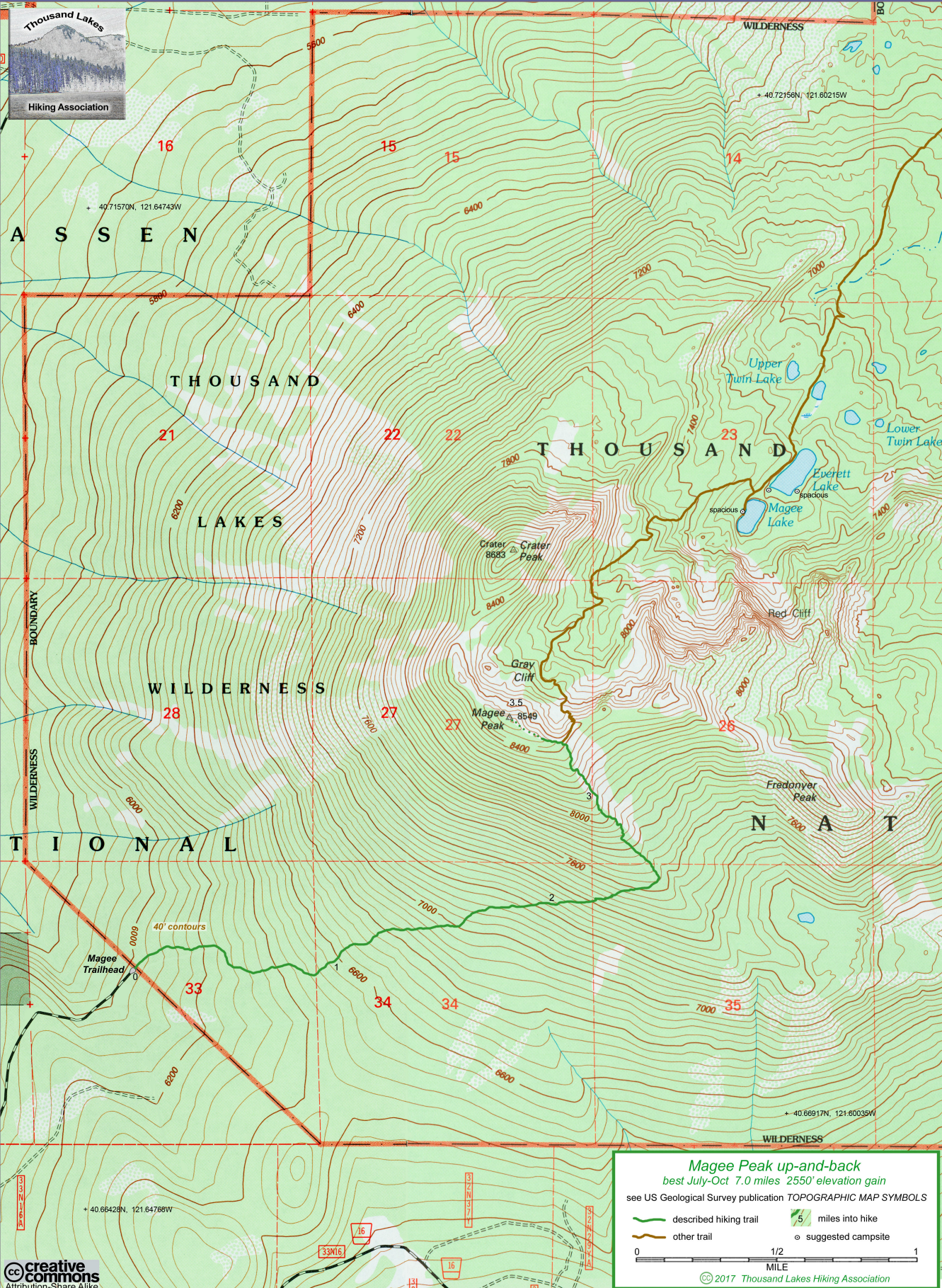
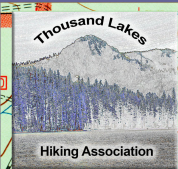


Magee Peak from Magee up-and-back ▪ Map 1 of 3



Magee Peak from Magee up-and-back ▪ Map 2 of 3



Magee Peak up-and-back
best July-Oct 7.0 miles 2550' elevation gain
see US Geological Survey publication **TOPOGRAPHIC MAP SYMBOLS**

described hiking trail	5 miles into hike
other trail	suggested campsite

0 1/2 1
MILE

© 2017 Thousand Lakes Hiking Association